

Utility Infrastructure



The Mildura region has suitable existing utility infrastructure to support continued population and business growth into the future. Furthermore, extensive planning and analysis is currently underway by many authorities to ensure that the provision of utility infrastructure keeps pace with development.

Water and Wastewater

The Mildura region has access to sufficient water and wastewater for future business and industry growth. Water is managed in the region through various government organisations. The Murray Darling Basin Authority is the Commonwealth agency that allocates base loads of water from the overall river system. The Victorian Government through its agent, Goulburn-Murray Water, manage the transfer of water to the local authority, Lower Murray Water. Bulk water entitlements are made available for urban users (residential and industrial), rural users (irrigation) and the environment.

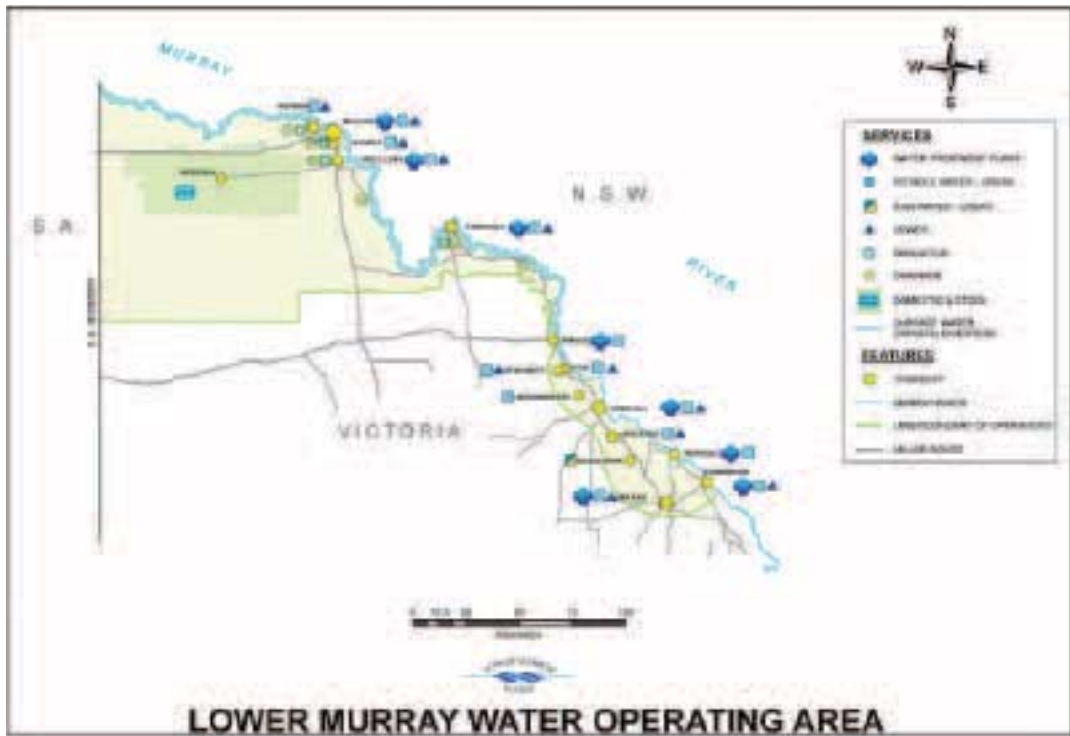
Lower Murray Water

Lower Murray Water provides various urban and rural water and waste water services for the Mildura Rural City Council area as well as the Swan Hill and Gannawarra municipalities, including:

- Urban water services to 15 townships (approx. 60,000 customers) via nine treatment plants
- Wastewater collection, treatment and effluent re-use and disposal services to 11 towns via 10 treatment plants
- River quality water services to 3,701 customers in the three pumped irrigation districts of Merbein, Red Cliffs and Robinvale, the Millewa rural district and some areas of the waterworks districts of Carwarp and Yelta
- Management of the region's rural bulk water entitlement of 440,107ML
- The collection and disposal of subsurface drainage water from the three pumped irrigation districts, Nangiloc, Robinvale diverters and Boundary Bend
- Ensuring drainage design in new agricultural developments conforms with salinity management plan development guidelines
- Partnership in the design, implementation, operation and maintenance of works initiated by the Mallee Darling Basin Authority
- Management of the private diversion licences of 1,061 water users along the Murray River in Victoria between Nyah and the South Australian border
- The assessment and approval of permanent and temporary water trade applications
- Reclaimed water for third party use

Lower Murray Water is the main water authority for residents, business and industry in the north of the Mildura Rural City Council area.

www.lmw.vic.gov.au

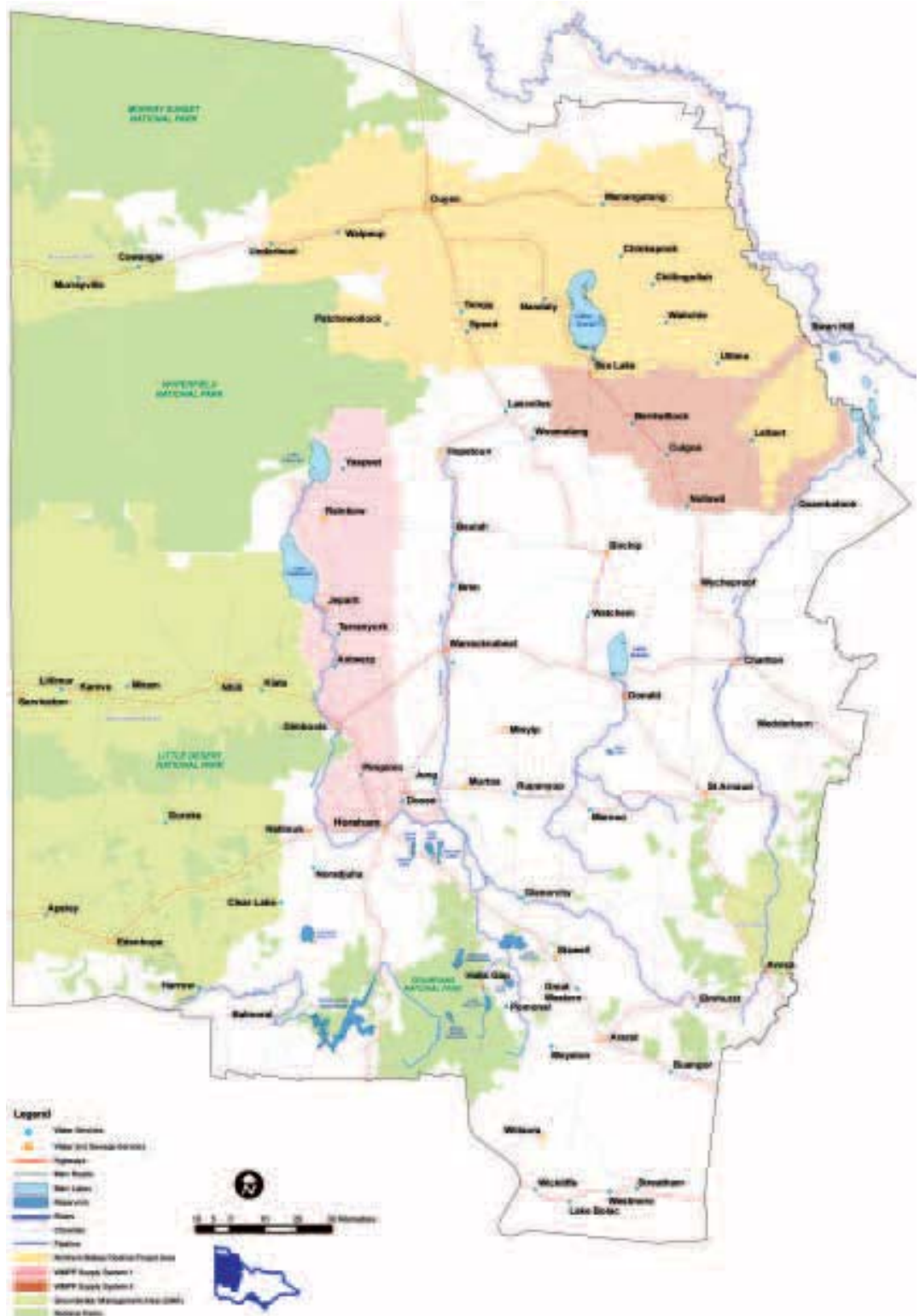


Grampians Wimmera Mallee Water

Grampians Wimmera Mallee Water Corporation, trading as GWMWater, services towns and farms in the south of the Mildura Rural City Council region with water and wastewater services. Water is provided from the Murray River through the pressurised Northern Mallee Pipeline. The Northern Mallee Pipeline is a 3,650 kilometre pipeline which covers an approximate area of 890,000 hectares.

GWMWater is also responsible for monitoring the groundwater conditions and usage within the Murrayville Water Supply Protection Area (WSPA). The Murrayville WSPA occupies 1,578 sq kms, with the dominant land use being dryland agriculture. Good quality groundwater has also encouraged the development of irrigated crops such as potatoes and olives.

www.gwmwater.org.au



Source: AECgroup; Grampians Wimmera Mallee Water (2009)

Western Murray Irrigation Limited

Western Murray Irrigation (WMI), located in the Wentworth Shire Council area is a privately owned irrigation infrastructure operator. WMI is responsible for the delivery of unfiltered River Murray water to over 500 customers including irrigators and stock and domestic users. The fully pipelined and pressurised delivery systems provide water on demand 24 hours, 365 days of the year to the Buronga, Coomealla and Curlwaa areas. WMI also manages the disposal of drainage water and water trade to and from the bulk entitlement licence.

www.westernmurray.com.au

Wentworth Shire Council

Residents and businesses within the Wentworth Shire are provided with filtered and raw water for domestic and industrial use within the Shire.

Water is drawn from both the Murray River and the Darling River to provide a dual water supply for the townships of Wentworth, Buronga, Gol Gol, Dareton, and Pooncarie.

Within the municipality, Council has two lagoon sedimentation water treatment works and one Laemealla clarifier plant, 14 service reservoirs, 8 water pumping stations, 32 km of trunk mains, and 132 km of reticulation.

The Wastewater system includes wastewater treatment works providing tertiary treatment (trickling filter and oxidation ponds), 30 wastewater pumping stations comprising of wet and dry wells, 19 km of rising mains and 76 km of gravity trunk mains and reticulation.

www.wentworth.nsw.gov.au

Power Infrastructure

The National electricity grid runs through the Mildura region.

The Mildura region receives electricity transmitted through the national grid from generation centres in Victoria and New South Wales. The Mildura LGA is serviced by an electricity network that is owned by Powercor, and an electricity transmission network (66kv and 220kv) that is owned by SP Ausnet. The Wentworth LGA is serviced by Country Energy. There are three 220kV transmission lines that feed into the Mildura region as well as a DC underground transmission cable linking into South Australia. Within the region, there are six substations that convert power from 66kV to 22kV for distribution to users. These substations are located at Merbein, Mildura, Ouyen, Wemen, Robinvale and Boundary Bend (commissioned in October 2008). This network ensures a high reliability of electricity service by providing numerous sources for power both in terms of substations as well as multiple generation sources.

Mildura Rural City Council Region Electricity Network



Source: SunRISE 21, Powercor Australia (2009)

Powercor

There are currently many planned upgrades to this electricity network, in order to ensure that residents and business receive the highest standard of service. These improvements include:

- Network upgrades to connect a new 66kV line from Ouyen to Kulwin for the Iluka mineral sands mine (2009)
- A new 220kV terminal station at Wemen east (2009)
- A new 66kV line from Wemen east terminal station to Wemen zone sub (2009)
- A new 66kV line from Red Cliffs via Mildura to Buronga in NSW (2010)
- New 66kV lines to connect the planned Solar Systems generation station, which will have a maximum capacity of 154 MW (2010-2011)

www.powercor.com.au

Indicative Electricity Costs, January 2009

General Purpose Tariff E	Rate (ex. GST)	Rate (incl. GST)
First 333 kWh/month	\$0.1839/kWh	\$0.2023/kWh
Balance	\$0.1947/kWh	\$0.2142/kWh

Source: AECgroup; Origin Energy (2009)

Note: The above cost information is indicative only, based on certain operating assumptions. Actual costs may vary and additional charges may apply.

Country Energy

Country Energy services the Wentworth LGA and has a Field Service Centre and a Customer Service Centre located in Wentworth.

www.countryenergy.com.au

A Selection of Current Projects

Project Name	Project Description	Projected Investment
Buronga Town New zone substation	Construct a new zone substation and 66,000 Volt powerline.	\$8 million
Buronga Distribution powerline conductor replacement	Replace and upgrade distribution powerlines along the Silver City Highway.	\$550,000
Gol Gol Distribution powerline upgrade	Upgrade the distribution powerline.	\$310,000

Natural Gas Infrastructure

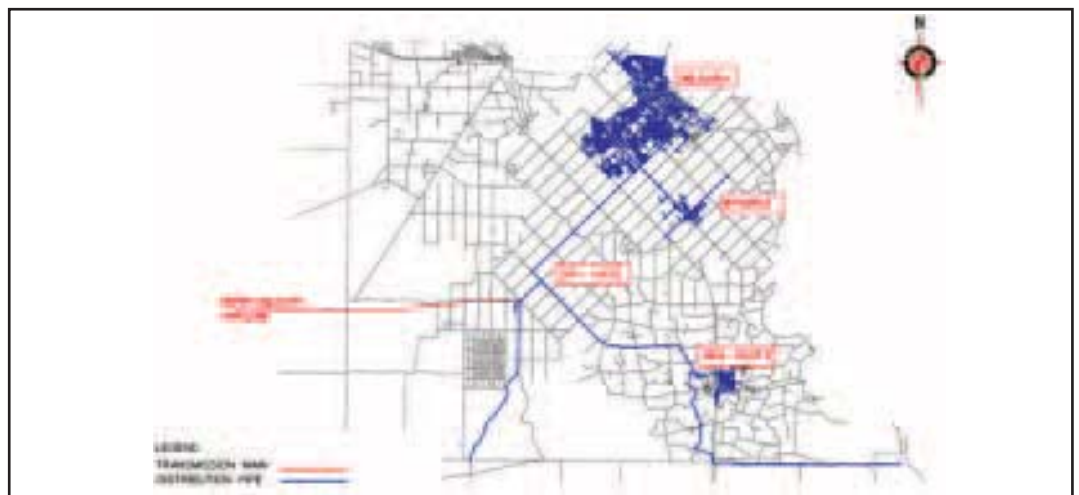
Mildura is serviced with natural gas by the Berri-Mildura Pipeline. From the City Gate, a distribution network delivers high pressure natural gas to business and residential customers in Mildura, Irymple and Red Cliffs.

The Mildura network is a 0.4 PJ high pressure network.

Origin Energy is the natural gas retailer for the Mildura region.

www.originenergy.com.au

Mildura Natural Gas Network



Source: AECgroup; Envestra Limited (2009)

Indicative Natural Gas Costs, January 2009

244 Commercial / Industrial Tariff	Rate (ex. GST)	Rate (incl. GST)
First 1,500 MJ	\$0.02026/MJ	\$0.02228/MJ
Next 81,833 MJ	\$0.01301/MJ	\$0.01432/MJ
Next 333,333 MJ	\$0.01220/MJ	\$0.01342/MJ
Over 416,666 MJ	\$0.01155/MJ	\$0.01271/MJ

Source: AECgroup; Origin Energy (2009)

Note: The price above is indicative only. Actual costs may vary and additional charges may apply.

Telecommunications

Telstra

Telstra provides telecommunications infrastructure in the Mildura region. Currently they provide exchanges with BigPond® Broadband ADSL access in the following localities:

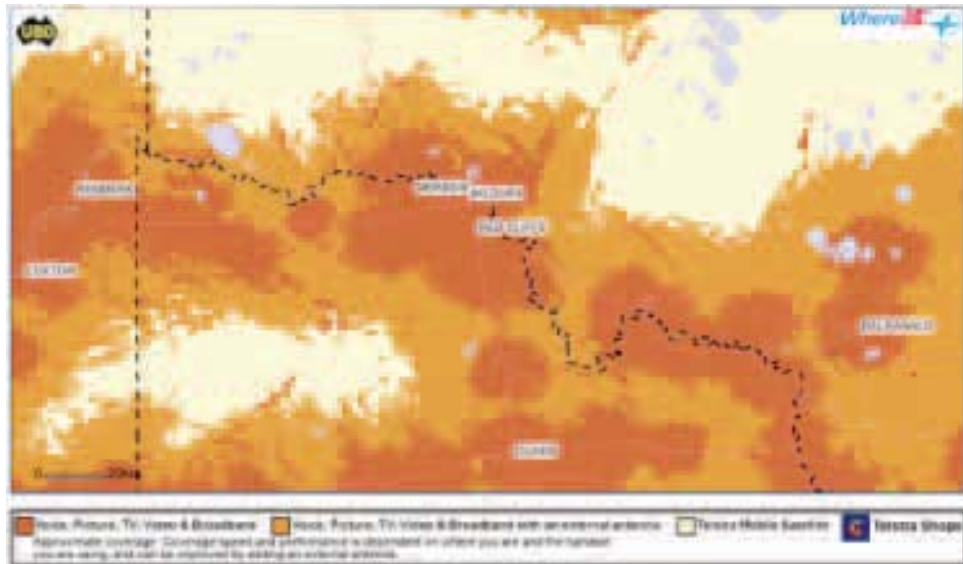
Curlwaa, Dareton, Gol Gol, Irymple, Koorlong, Merbein, Merbein South, Mildura, Murrayville, Nangiloc, Ouyen, Red Cliffs, Underbool, Wentworth and Walpeup.

Telstra also provide mobile coverage in the following areas:

Carwarp, Cowangie, Cullulleraine, Hattah, Irymple, Karadoc, Merbein, Mildura, Mildura Central, Mildura South, Nangiloc, Ouyen, Red Cliffs, Underbool, Wentworth, Walpeup, Kulwin and Yelta.

www.telstra.com.au

Telstra Coverage in the Mildura Region



Source: AECgroup; www.telstra.com.au (2009)

Neighbourhood Cable

Neighbourhood Cable is a telecommunications infrastructure and services provider in Mildura.

Services offered by Neighbourhood Cable include:

- High speed Broadband Internet
- VoIP telephony
- Over 30 channels of Pay-TV
- Network-based services and applications solutions
- Domain registration and webhosting
- Off-site storage for security
- Wireless solutions, ADSL and Dial-up for customers away from the cable network
- High speed Virtual Private Networks
- Mobile phones

Having an independent network gives Neighbourhood Cable the freedom to design and deliver telecommunications services that are affordable, reliable, fast and friendly to their target market.

www.ncable.net.au