

# *Income & Employment*



INCOME AND EMPLOYMENT STATISTICS  
FOR THE MILDURA REGION



# 3. INCOME & EMPLOYMENT

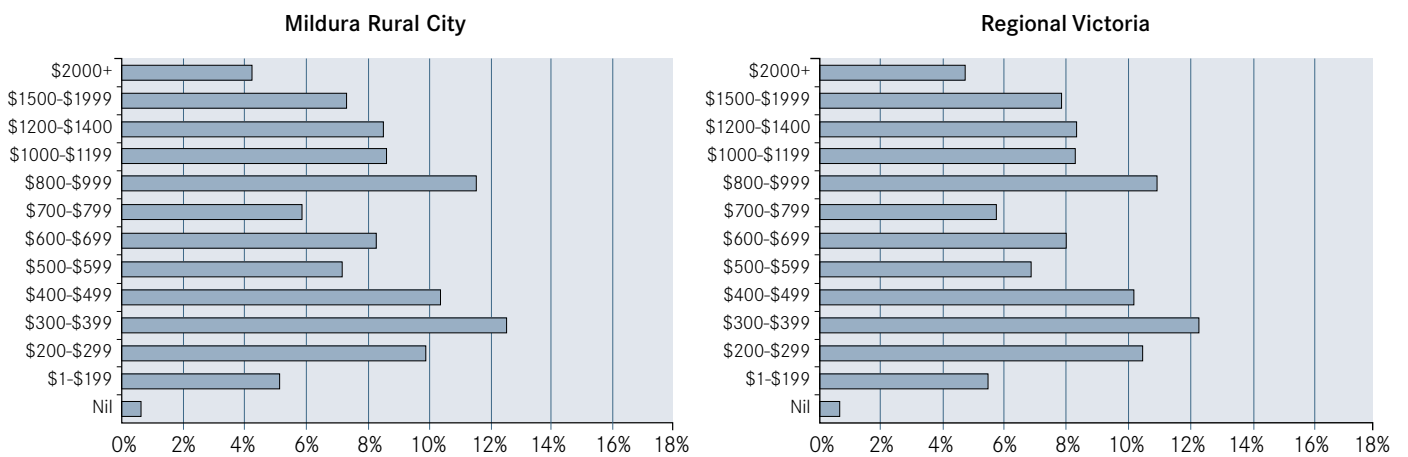
## 3.1 INCOME

### 3.1.1 HOUSEHOLD INCOME

At the time of the 2001 Census, the median household income in the Mildura Region was \$600 to \$699 per week, having increased from \$400 to \$499 in 1996. An analysis of the distribution of household incomes across both Mildura Rural City and Wentworth Shire combined shows that the majority of households in the region have an average income of \$300 to \$399 per week. The same situation applies in both regional Victoria and regional NSW.

In fact, as reflected in the Figure 3.1, the distribution of household income in Mildura Rural City is similar to that throughout regional Victoria, albeit with Mildura having a slightly greater representation in the middle ranges of \$300 to \$999 per week, and a slightly smaller proportion at both the upper and lower ends of the scale.

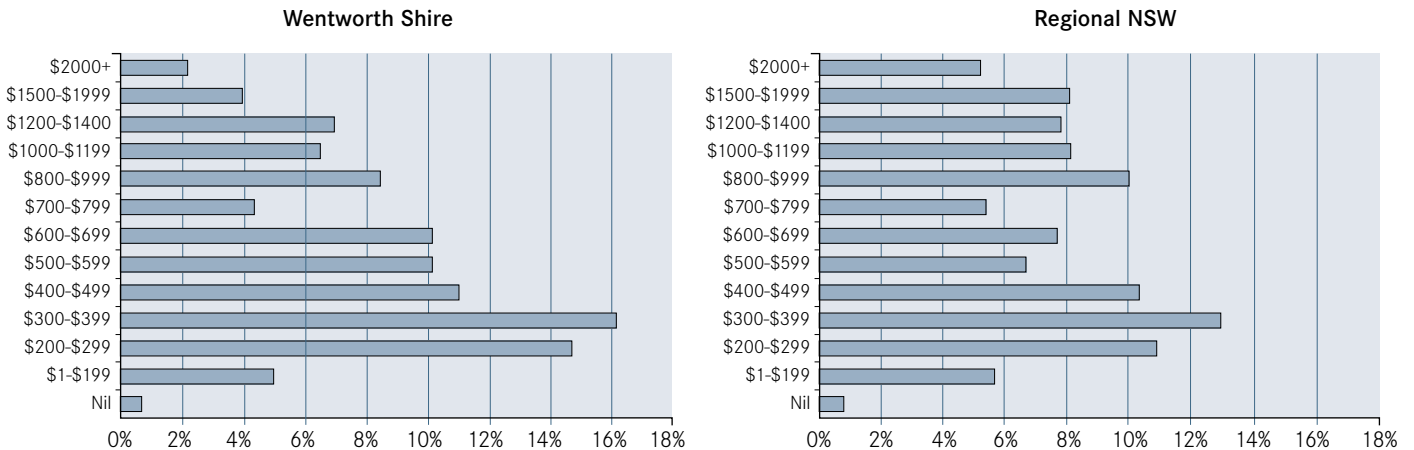
**FIGURE 3.1 WEEKLY HOUSEHOLD INCOME, MILDURA RURAL CITY/REGIONAL VICTORIA, 2001<sup>6</sup>**



Source: ABS Census of Population and Housing, 2001

Wentworth, on the other hand, as reflected in Figure 3.2, shows a markedly different pattern to that of regional NSW with a significantly smaller proportion of households earning higher incomes. For example, only 42% of households in Wentworth Shire earned more than \$600 per week on average compared with 53% for regional NSW.

**FIGURE 3.2 WEEKLY HOUSEHOLD INCOME, WENTWORTH SHIRE/REGIONAL NSW, 2001<sup>7</sup>**



Source: ABS Census of Population and Housing, 2001

<sup>6</sup> Calculations exclude not stated.

<sup>7</sup> Calculations exclude not stated.

Figure 3.3 provides the breakdown of households and percentages for both Mildura Rural City and Wentworth Shire compared to regional Victoria and regional New South Wales, as well as for the total region.

**FIGURE 3.3 HOUSEHOLD INCOME COMPARISONS – MILDURA REGION, 2001**

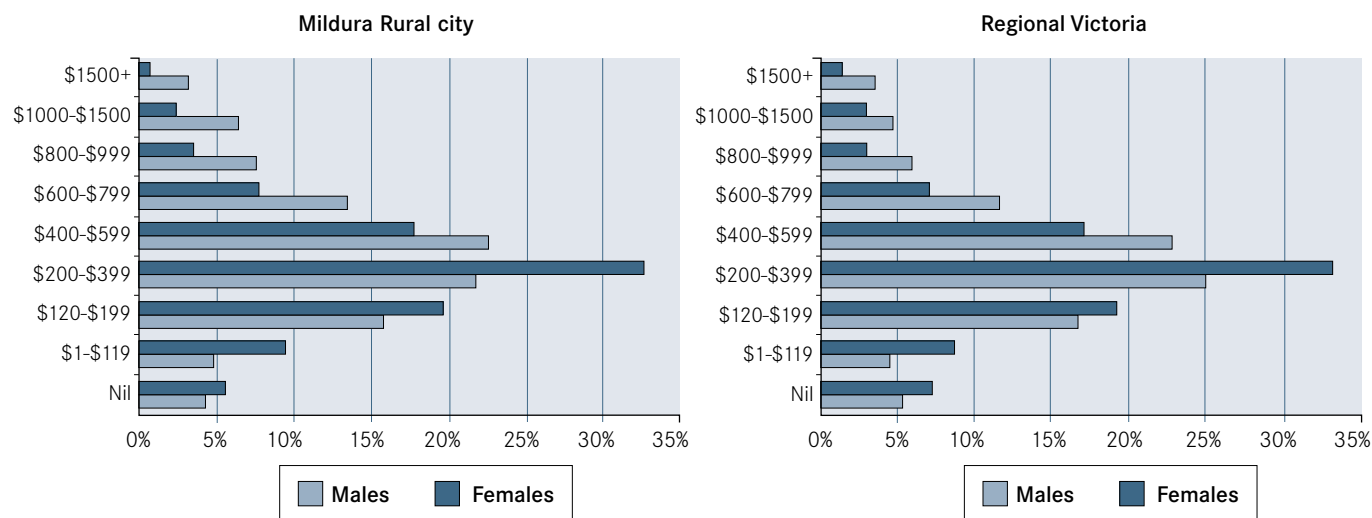
Weekly Household Income Range	Number and Percentage of Households									
	Mildura Rural City		Regional Victoria		Wentworth Shire		Regional NSW		Mildura Region	
\$2000+	650	4.22%	19,906	4.77%	10	2.16%	40,296	5.24%	660	4.16%
\$1500-\$1999	1,120	7.27%	32,821	7.87%	18	3.89%	62,470	8.12%	1,138	7.18%
\$1200-\$1400	1,303	8.46%	34,768	8.33%	32	6.91%	60,506	7.86%	1,335	8.42%
\$1000-\$1199	1,324	8.60%	34,645	8.31%	30	6.48%	62,769	8.16%	1,354	8.54%
\$800-\$999	1,778	11.55%	45,664	10.95%	39	8.42%	77,176	10.03%	1,817	11.46%
\$700-\$799	898	5.83%	24,049	5.77%	20	4.32%	41,825	5.44%	918	5.79%
\$600-\$699	1,280	8.31%	33,408	8.01%	47	10.15%	59,228	7.70%	1,327	8.37%
\$500-\$599	1,101	7.15%	28,799	6.90%	47	10.15%	51,543	6.70%	1,148	7.24%
\$400-\$499	1,596	10.37%	42,536	10.20%	51	11.02%	79,805	10.37%	1,647	10.39%
\$300-\$399	1,933	12.56%	51,235	12.28%	75	16.20%	100,228	13.03%	2,008	12.66%
\$200-\$299	1,523	9.89%	43,675	10.47%	68	14.69%	84,307	10.96%	1,591	10.03%
\$1-\$199	793	5.15%	22,783	5.46%	23	4.97%	43,553	5.66%	816	5.15%
Nil	97	0.63%	2,852	0.68%	3	0.65%	5,780	0.75%	100	0.63%
<b>Total Households (excluding not stated)</b>	<b>15,396</b>		<b>417,141</b>		<b>463</b>		<b>769,486</b>		<b>15,859</b>	

Source: ABS Census of Population and Housing, 2001

### 3.1.2 INDIVIDUAL INCOME

The median individual income for the Mildura Region in 2001 was \$300 to \$399 per week, having increased from \$200 to \$299 in 1996. The relative distribution compared with regional state counterparts shows a similar picture to household income, as Figure 3.4 illustrates. It demonstrates that Mildura City has a similar distribution to regional Victoria, and a similar disparity between males and females in distribution. It shows that most males earned an average of \$400 to \$599 per week in Mildura City, while most females earned \$200 to \$399 per week. It also shows there were relatively fewer males and females in Mildura City with nil or negative incomes compared with regional Victoria.

**FIGURE 3.4 INDIVIDUAL INCOME, MILDURA RURAL CITY/REGIONAL VICTORIA, 2001<sup>8</sup>**

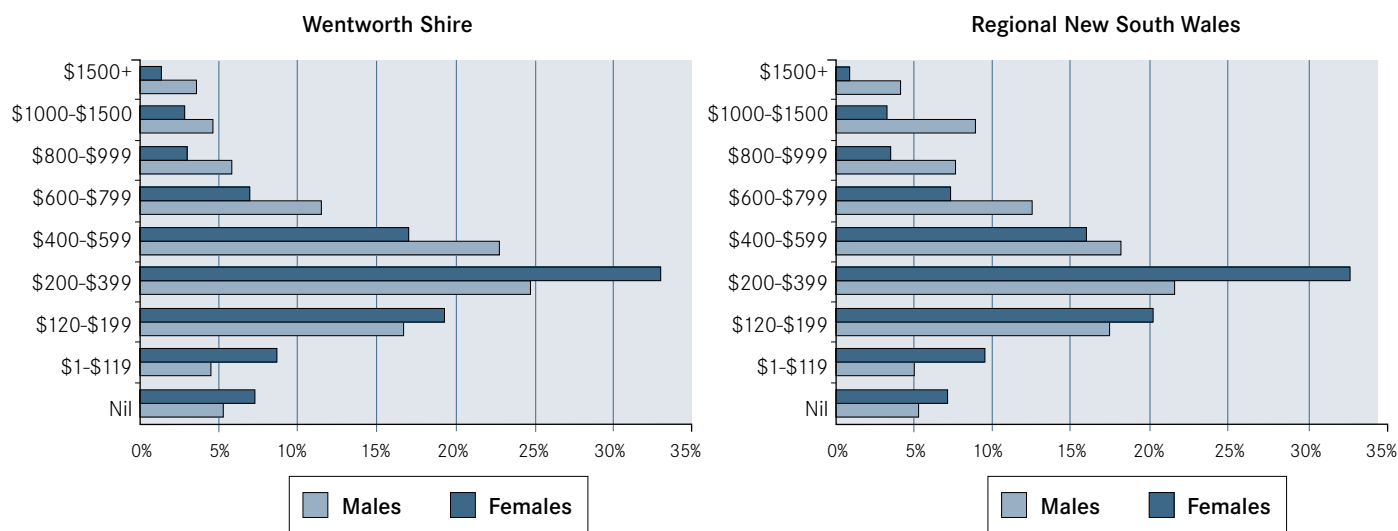


Source: ABS Census of Population and Housing, 2001

<sup>8</sup> Calculations exclude not stated

While there were also relatively fewer males and females in Wentworth with nil or negative incomes compared with regional NSW, there were substantially fewer earning higher incomes. For example, Wentworth Shire had 22% of males and 12% of females earning more than \$600 a week, while regional NSW had 33% and 15% respectively, as shown in Figure 3.5.

**FIGURE 3.5 INDIVIDUAL INCOME, WENTWORTH SHIRE/REGIONAL NSW, 2001**



Source: ABS Census of Population and Housing, 2001

The data represented in the graphs above is shown in detail for both Mildura and Wentworth in Figures 3.6 and 3.7.

**FIGURE 3.6 INDIVIDUAL INCOME COMPARISONS – MILDURA RURAL CITY**

Weekly Individual Income Range	Mildura Rural City				Regional Victoria			
	Males		Females		Males		Females	
\$1500+	536	3.2%	131	0.8%	16,872	3.8%	4,230	0.9%
\$1000-\$1500	1,089	6.5%	420	2.4%	37,310	8.3%	12,634	2.7%
\$800-\$999	1,266	7.5%	614	3.5%	36,788	8.2%	16,873	3.6%
\$600-\$799	2,278	13.6%	1,337	7.7%	60,818	13.6%	35,662	7.7%
\$400-\$599	3,803	22.7%	3,085	17.8%	89,512	20.0%	77,688	16.7%
\$200-\$399	3,662	21.8%	5,684	32.9%	93,140	20.8%	148,958	32.0%
\$120-\$199	2,647	15.8%	3,420	19.8%	67,733	15.1%	89,226	19.1%
\$1-\$119	791	4.7%	1,647	9.5%	23,157	5.2%	48,412	10.4%
Nil	718	4.3%	959	5.5%	22,687	5.1%	32,457	7.0%
<b>Total (excluding not stated)</b>	<b>16,790</b>		<b>17,297</b>		<b>448,017</b>		<b>466,140</b>	

Source: ABS Census of Population and Housing, 2001

**FIGURE 3.7 INDIVIDUAL INCOME COMPARISONS – WENTWORTH SHIRE**

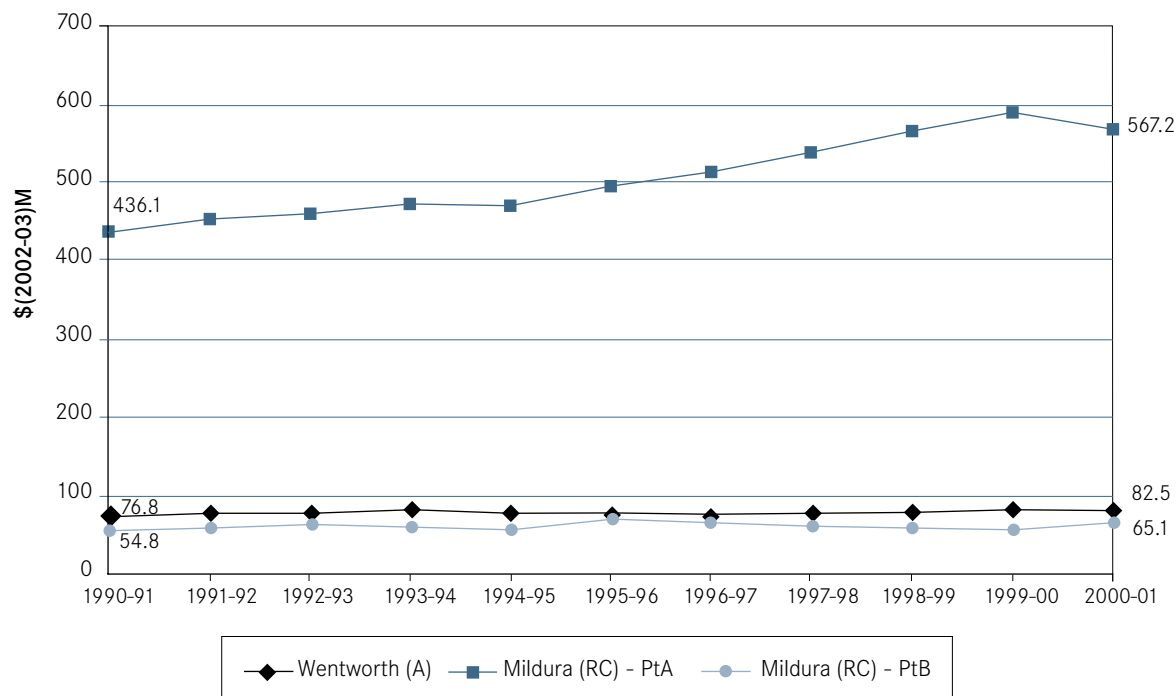
Weekly Individual Income Range	Wentworth Shire				Regional NSW			
	Males		Females		Males		Females	
\$1500+	94	3.6%	35	1.5%	34,455	4.1%	7,508	0.9%
\$1000-\$1500	121	4.7%	68	2.9%	75,101	8.9%	28,238	3.2%
\$800-\$999	154	5.9%	72	3.1%	64,187	7.6%	30,270	3.5%
\$600-\$799	300	11.6%	166	7.1%	105,511	12.5%	63,809	7.3%
\$400-\$599	591	22.8%	402	17.1%	152,748	18.1%	138,355	15.9%
\$200-\$399	645	24.9%	779	33.2%	180,966	21.4%	282,861	32.5%
\$120-\$199	434	16.7%	452	19.3%	145,893	17.3%	175,236	20.1%
\$1-\$119	116	4.5%	204	8.7%	41,685	4.9%	82,134	9.4%
Nil	137	5.3%	170	7.2%	43,714	5.2%	61,640	7.1%
<b>Total (excluding not stated)</b>	<b>2,592</b>		<b>2,348</b>		<b>844,260</b>		<b>870,051</b>	

Source: ABS Census of Population and Housing, 2001

### 3.1.3 TAXABLE INCOME

Aggregate real taxable income is an indicator of economic activity, and along with population and employment growth, is a reflection of economic performance over time. Figures 3.8 and 3.9 show the change in aggregate real taxable income from 1990-1991 to 2000-2001 for the three SLAs in the Mildura Region. Figure 3.8 illustrates the changes per year - from \$436.1 million in 1990-1991 to \$567.2 million in 2000-2001 for Mildura Part A; \$54.8 million to \$65.1 million for Mildura Part B; and \$76.8 million to \$82.5 million for Wentworth. Figure 3.9 shows the annual rates and highlights the quite dramatic income growth of aggregate real taxable income in Mildura Part A (2.7 % pa over the period) compared to both Mildura Part B (1.7%) and Wentworth (0.7%). This confirms the concentration of economic activity in the Mildura urban area, and demonstrates the impact of its population growth.

**FIGURE 3.8 AGGREGATE REAL TAXABLE INCOME (ARTI) BY SLA, MILDURA REGION 1990-1991 TO 2000-2001, \$MILLION**



Source: Bureau of Transport and Regional Economics (BTRE, based on Australian Taxation Office data).

**FIGURE 3.9 ANNUAL RATE OF GROWTH OF AGGREGATE REAL TAXABLE INCOME, MILDURA REGION 1990-1991 TO 2000-2001**

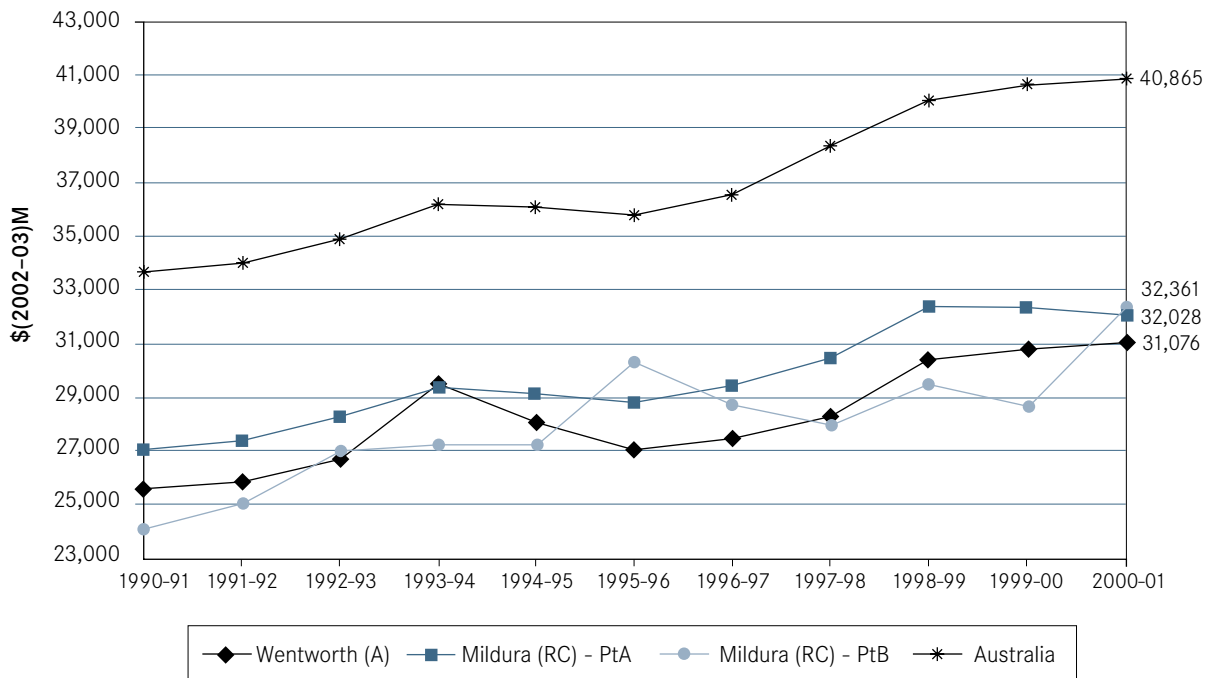
Mildura (RC) Pt A	2.7%
Mildura (RC) Pt B	1.7%
<b>Total Mildura Rural City</b>	<b>2.6%</b>
Wentworth (A)	0.7%
<b>Total Mildura Region</b>	<b>2.3%</b>
Australia	2.7%
Australian annual growth of GDP (chain volume measure)*	3.5%

Source: BTRE estimates based on Australian Taxation Office data.  
\*ABS Cat 5204.0

Figure 3.9 also shows that the average annual growth in aggregate real taxable income in Mildura Rural City from 1990/91 to 2000/01 is similar to the Australian average, despite the fact that rural areas typically lag their metropolitan counterparts by a significant margin.

A comparison of *mean* real taxable income in the SLAs within the Mildura Region and Australia is presented in Figure 3.10. The most striking feature of this graph is the relatively low mean taxable income of all three areas compared to the Australian average. This dwarfs the differences between the SLAs. Considered in conjunction with the comparison of aggregate real taxable income, results suggest that the Mildura Region has benefited from growth in the number of people generating taxable income (relative to Australia) thereby boosting its aggregate taxable income, but probably has a smaller proportion generating large taxable incomes which reduces the average.

**FIGURE 3.10 REAL INCOME PER TAXPAYER, MILDURA REGION 1990-1991 TO 2000-2001, \$**



Source: BTRE Taxable Income Database

Figure 3.10 also shows that Mildura Part A is less volatile than the rural parts of the region where there is less economic diversity and a more pronounced dependence upon agriculture.

## 3.2 EMPLOYMENT

### 3.2.1 WORKFORCE STATUS

In 2001, the Mildura Region had a workforce participation rate (% of persons aged 15 years or more either working or looking for work) of 62.5% and a rate of unemployment of 6.5%. Workforce participation was higher in the rural parts of the region (particularly in Mildura Part B), while the unemployment rate was greater in the Mildura urban area. Rates of unemployment in Mildura Part B were particularly low.

The workforce status of the Mildura Region compares favourably with both regional Victoria and regional NSW, with the region having a greater workforce participation rate and a lower unemployment rate than both their regional state counterparts. This indicates that more people are seeking to work in the region and that a greater proportion of them are able to find a job. Figure 3.11 presents details.

**FIGURE 3.11 WORKFORCE STATUS, MILDURA REGION, 2001**

	Unemployment Rate			Workforce Participation Rate		
	Males	Females	Total	Males	Females	Total
Mildura Part A	7.2%	6.7%	7.0%	70.5%	53.6%	61.8%
Mildura Part B	3.9%	2.8%	3.5%	77.3%	60.1%	69.3%
Mildura Rural City	6.9%	6.4%	6.7%	71.1%	54.1%	62.5%
Regional Victoria	7.8%	6.9%	7.4%	69.6%	52.9%	61.1%
Wentworth	5.9%	5.0%	5.5%	71.3%	53.4%	62.7%
Regional NSW	10.1%	8.2%	9.3%	65.8%	50.1%	57.9%
Mildura Region	6.8%	6.2%	6.5%	71.2%	54.0%	62.5%

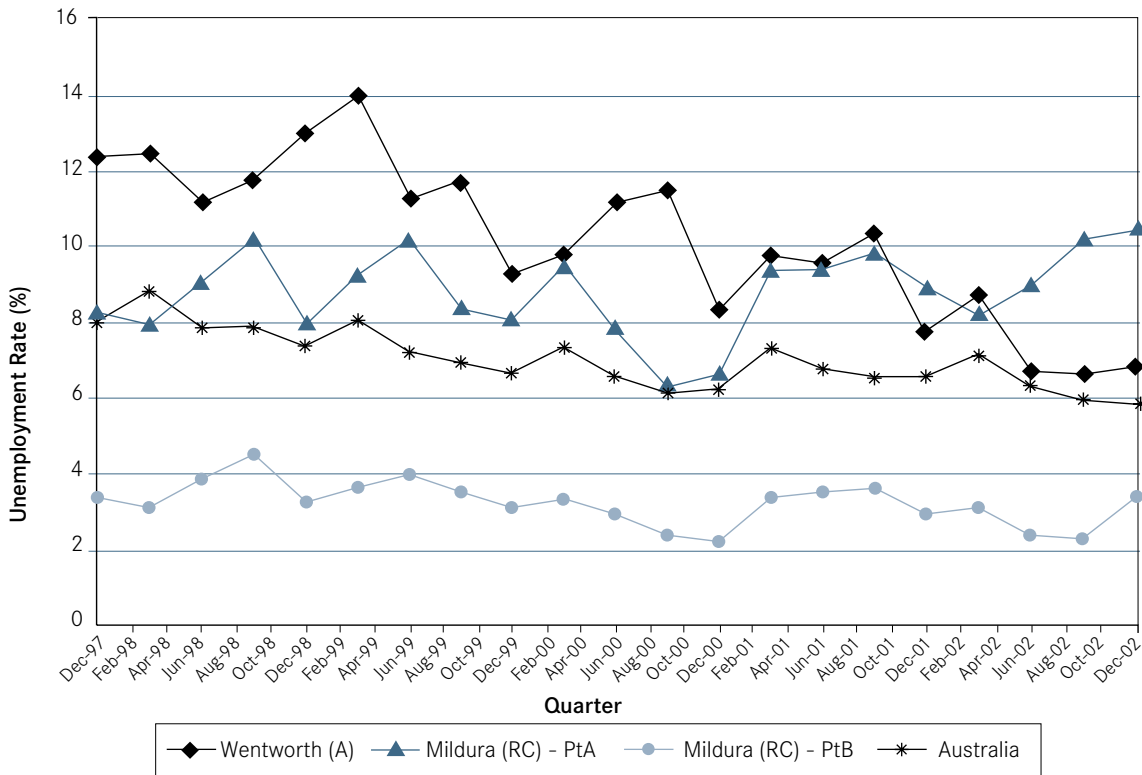
Source: ABS, Census of Population and Housing, 2001

### 3.2.2 UNEMPLOYMENT RATES

Figure 3.12 shows a longer term trend in unemployment rates (from December 1997 to December 2002) for Mildura Rural City and Wentworth Shire compared with Australia. It shows that unemployment rates for Wentworth Shire and Mildura Part A are higher than Australia and much higher than Mildura Part B. Mildura Part B is typical of the low rates of unemployment found in small rural areas, usually explained by migration towards larger centres to find work.

This situation is consistent with the higher unemployment of Mildura Part A, typical of a larger regional centre. It should also be noted that while all SLAs show elements of seasonality, regional changes tend to be more pronounced than the national patterns, suggesting short-term employment is closely related to specific (agricultural) industry demands. Again, this is typical of horticultural areas with strong seasonal peaks in activity.

**FIGURE 3.12 UNEMPLOYMENT RATES DECEMBER 1997 TO DECEMBER 2002**



Source: Bureau of Transport and Regional Economics

### 3.2.3 EMPLOYMENT BY INDUSTRY AND OCCUPATION

In 2001, one fifth of all employed persons in the Mildura Region worked in the agriculture industry. This was the region's largest employer. As expected, the dominance of agriculture is more pronounced in the rural parts of the region (although agriculture is still the second largest employer in Mildura Part A). For example, just over half all employed persons in Mildura Part B and almost one third in Wentworth Shire were employed in agriculture. By comparison, 8.9% of employed persons in regional NSW and 11.5% of employed persons in regional Victoria worked in agriculture. This demonstrates the significance of agriculture to the Mildura Region.

Other dominant industries in the region (in terms of numbers employed) are retail (with 15.2% of employed persons), manufacturing (9.6%) and health and community services (9.2%). The largest employer in Mildura Part A is retail, accounting for 16.3% of all workers. Concentrations of employment in these industry sectors are typical of larger regional centres performing a service function for a broader geographic area, as is the case with Mildura. Figure 3.13 presents details of employment by industry in the region.

**FIGURE 3.13 NUMBER OF EMPLOYEES BY INDUSTRY 2001**

	Mildura (RC) Pt A	Mildura (RC) Pt B	Total Mildura	Wentworth (A)	Total Mildura Region	Total Mildura Region %
Agriculture	2,609	1,073	3,682	960	4,642	20.1%
Mining	91	10	101	22	123	0.5%
Manufacturing	1,923	79	2,002	231	2,233	9.6%
Electricity, Gas & Water Supply	228	21	249	38	287	1.2%
Construction	1,112	51	1,163	160	1,323	5.7%
Wholesale Trade	1,203	99	1,302	181	1,483	6.4%
Retail Trade	3,018	181	3,199	317	3,516	15.2%
Accommodation, Cafés & Restaurants	894	58	952	186	1,138	4.9%
Transport & Storage	715	60	775	122	897	3.9%
Communication Services	172	16	188	14	202	0.9%
Finance & Insurance	349	20	369	31	400	1.7%
Property & Business Services	1,263	56	1,319	131	1,450	6.3%
Government Administration & Defence	464	44	508	109	617	2.7%
Education	1,345	141	1,486	179	1,665	7.2%
Health and Community Services	1,807	119	1,926	201	2,127	9.2%
Cultural & Recreational Services	303	16	319	39	358	1.5%
Personal and Other Services	592	24	616	72	688	3.0%
Non classified	57	11	68	10	78	
Not stated	390	49	439	45	484	
<b>Total</b>	<b>18,535</b>	<b>2,128</b>	<b>20,663</b>	<b>3,048</b>	<b>23,711</b>	<b>100%</b>

Source: ABS Employment by Industry Time Series

The largest occupation group of those employed in the Mildura Region is that of Managers and Administrators, accounting for 16% of all jobs. This is consistent with the representation of service sector industries and the high proportion of this occupation group in the agricultural industry. Most females in the region, however, were intermediate clerical and sales workers (representing 23% of all female jobs), followed by professionals (18% of all female jobs).

Figure 3.14 compares employment by occupation and sex in the Mildura Region with that of regional Victoria and regional NSW. It shows that the Mildura Region has:

- a higher proportion of both males and females working as labourers than both regional Victoria and regional NSW
- relatively fewer trades and related workers amongst both sexes
- fewer professionals amongst both sexes
- fewer associate professionals amongst both sexes.

Results suggest that, apart from managers and administrators, workers in the Mildura Region are concentrated more heavily in the lesser skilled occupations than occurs throughout both regional Victoria and regional NSW.

**FIGURE 3.14 NUMBER AND PERCENTAGE OF EMPLOYED PEOPLE BY OCCUPATION BY SEX – MILDURA REGION 2001, COMPARISON TO REGIONAL VICTORIA AND REGIONAL NSW**

Occupation	Males			Females		
	Mildura (RC) Number	Mildura (RC) %	Victoria Regional Percentage	Mildura (RC) Number	Mildura (RC) %	Victoria Regional Percentage
Managers and Administrators	2,302	19.9%	16.7%	781	8.6%	8.2%
Professionals	1,179	10.2%	11.4%	1,620	17.8%	19.4%
Associate Professionals	1,143	9.9%	10.8%	998	10.9%	11.6%
Tradespersons and Related Workers	2,056	17.8%	21.6%	274	3.0%	3.3%
Advanced Clerical, Sales and Service Workers	71	0.6%	0.5%	511	5.6%	5.7%
Intermediate Clerical, Sales and Service Workers	714	6.2%	6.3%	2,116	23.2%	23.4%
Intermediate Production and Transport Workers	1,309	11.3%	13.3%	184	2.0%	2.6%
Elementary Clerical, Sales and Service Workers	578	5.0%	5.2%	1,257	13.8%	14.7%
Labourers and Related Workers	1,934	16.8%	12.1%	1,172	12.9%	9.1%
Inadequately Described	92	0.8%	0.9%	46	0.5%	0.5%
Not Stated	168	1.5%	1.2%	157	1.7%	1.5%
<b>Total Employed</b>	<b>11,546</b>	<b>100.0%</b>	<b>100.0%</b>	<b>9,116</b>	<b>100.0%</b>	<b>100.0%</b>

Occupation	Males			Females		
	Wentworth Number	Wentworth %	NSW Regional Percentage	Wentworth Number	Wentworth %	NSW Regional Percentage
Managers and Administrators	529	29.3%	13.6%	190	15.4%	6.2%
Professionals	125	6.9%	12.0%	187	15.2%	19.1%
Associate Professionals	150	8.3%	11.1%	110	8.9%	11.4%
Tradespersons and Related Workers	295	16.4%	21.7%	49	4.0%	3.5%
Advanced Clerical, Sales and Service Workers	7	0.4%	0.5%	75	6.1%	6.9%
Intermediate Clerical, Sales and Service Workers	82	4.5%	7.0%	251	20.3%	25.2%
Intermediate Production and Transport Workers	177	9.8%	14.0%	26	2.1%	2.3%
Elementary Clerical, Sales and Service Workers	51	2.8%	5.6%	123	10.0%	15.1%
Labourers and Related Workers	337	18.7%	12.3%	194	15.7%	8.3%
Inadequately Described	18	1.0%	0.9%	6	0.5%	0.5%
Not Stated	32	1.8%	1.2%	23	1.9%	1.4%
<b>Total Employed</b>	<b>1,803</b>	<b>100.0%</b>	<b>100.0%</b>	<b>1,234</b>	<b>100.0%</b>	<b>100.0%</b>

Source: ABS Census of Population and Housing 2001

However, there is evidence to suggest that jobs in the lesser skilled occupations have grown at a slower rate than many of the intermediate and more highly skilled occupation groups. For example, the fastest growing occupation group in the region from 1991 to 2001 was “Associated Professionals” having increased by 72%, while total jobs increased by only 13.7%. Intermediate clerical positions, professional positions and intermediate production and transport worker positions also grew strongly with each more than doubling total job growth. Managers and administrators, the region’s largest occupation group, on the other hand, declined in number, as did advanced clerical, sales and service workers. Figures 3.15 and 3.16 illustrate.

**FIGURE 3.15 EMPLOYMENT BY OCCUPATION – MILDURA (RC) PT A AND PT B 1991–2001**

Occupation	1991		2001		% Change 91-01
	No. persons	%	No. Persons	%	
Managers and Administrators	3,300	18.6%	3,083	14.9%	-6.6%
Professionals	2,038	11.5%	2,799	13.5%	37.3%
Associate Professionals	1,227	6.9%	2,141	10.4%	74.5%
Tradespersons and Related Workers	1,947	11.0%	2,330	11.3%	19.7%
Advanced Clerical, Sales and Service Workers	792	4.5%	583	2.8%	-26.4%
Intermediate Production and Transport Workers	1,082	6.1%	1,493	7.2%	38.0%
Intermediate Clerical	1,720	9.7%	2,830	13.7%	64.5%
Elementary Clerical, Sales and Service Workers	1,797	10.1%	1,835	8.9%	2.1%
Labourers and Related Workers	2,460	13.9%	3,106	15.0%	26.3%
Inadequately described	161	0.9%	136	0.7%	-15.5%
Not stated	1,232	6.9%	325	1.6%	-73.6%
<b>Total</b>	<b>17,756</b>	<b>100.00%</b>	<b>20,661</b>	<b>100.00%</b>	

Source: ABS Employment by Occupation Time Series

**FIGURE 3.16 EMPLOYMENT BY OCCUPATION – WENTWORTH (A) 1991–2001**

Occupation	1991		2001		% Change 91-01
	No. persons	%	No. Persons	%	
Managers and Administrators	831	26.9%	717	23.5%	-13.7%
Professionals	231	7.5%	313	10.3%	35.5%
Associate Professionals	170	5.5%	262	8.6%	54.1%
Tradespersons and Related Workers	308	10.0%	345	11.3%	12.0%
Advanced Clerical, Sales and Service Workers	99	3.2%	85	2.8%	-14.1%
Intermediate Production and Transport Workers	174	5.6%	203	6.7%	16.7%
Intermediate Clerical	243	7.9%	336	11.0%	38.3%
Elementary Clerical, Sales and Service Workers	224	7.2%	174	5.7%	-22.3%
Labourers and Related Workers	588	19.0%	531	17.4%	-9.7%
Inadequately described	18	0.6%	28	0.9%	55.6%
Not stated	204	6.6%	54	1.8%	-73.5%
<b>Total</b>	<b>3,090</b>	<b>100.00%</b>	<b>3,048</b>	<b>100.00%</b>	

Source: ABS Employment by Occupation Time Series